



lacasa **sullalbero**®  
progettazione e realizzazione



## when was the last time you climbed a tree?

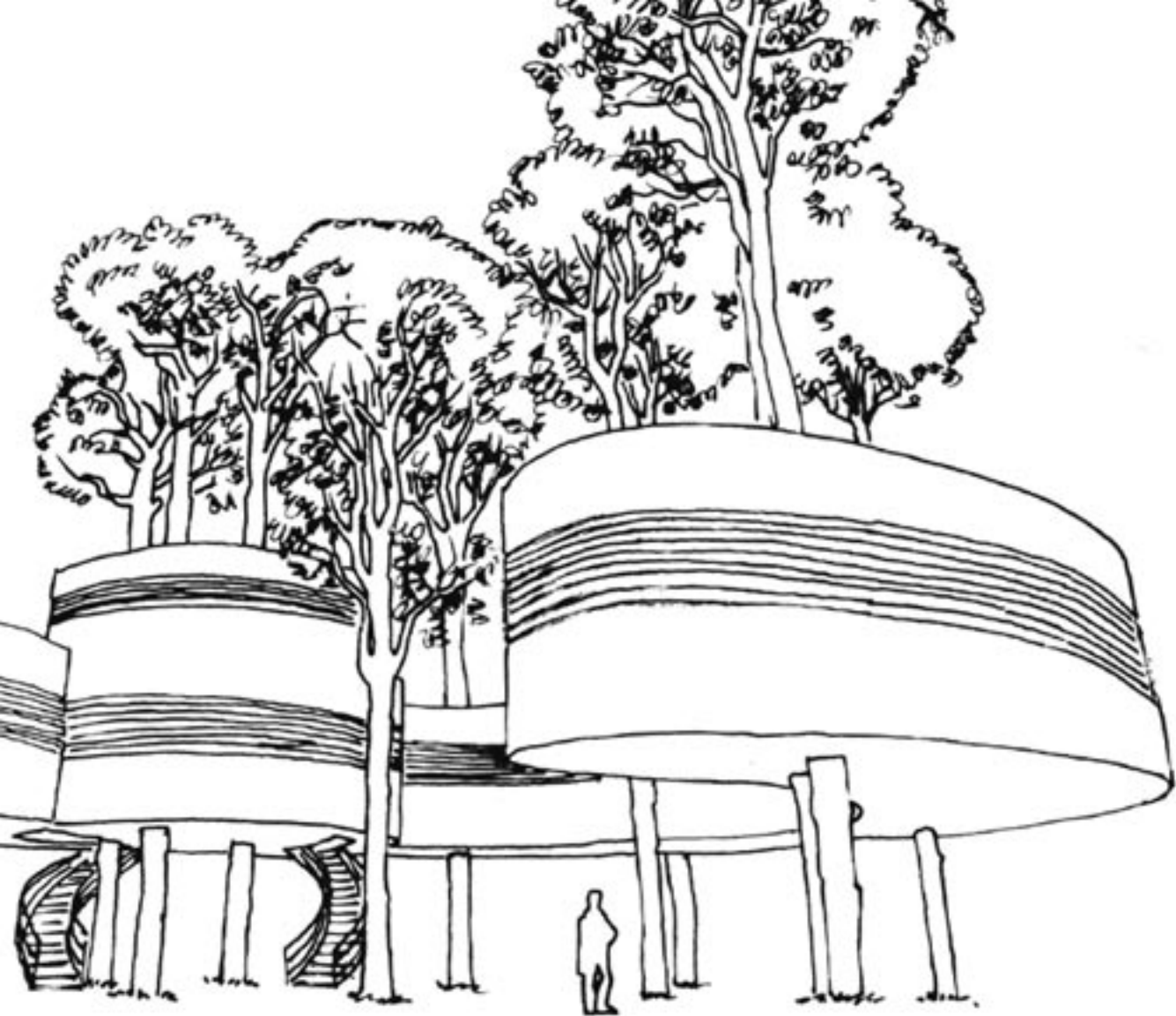
most of us won't remember. we probably climbed a few trees when we kids — we might have climbed up just a couple of feet off the ground, or perhaps we continued right up to the highest branches to hear the **wind** blow — but I guess nobody will remember the very first time they did it.

how old was I?

adults easily forget what it was like to peer through the leaves, looking down at things happening far away in the distance. you might well think it's just another of those **childhood** sensations that are gone forever.

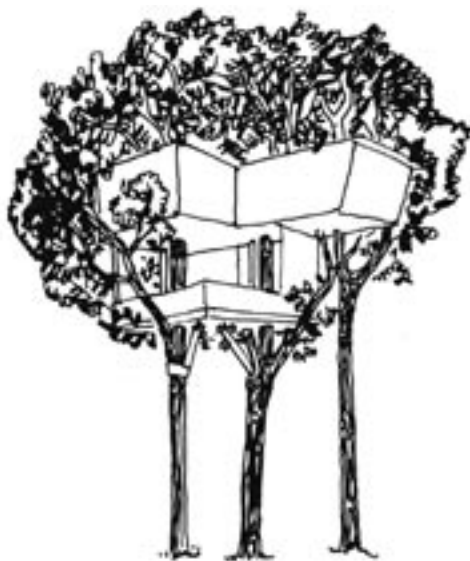
but it isn't. it doesn't matter how you get up a tree: it's all about **being** up there.

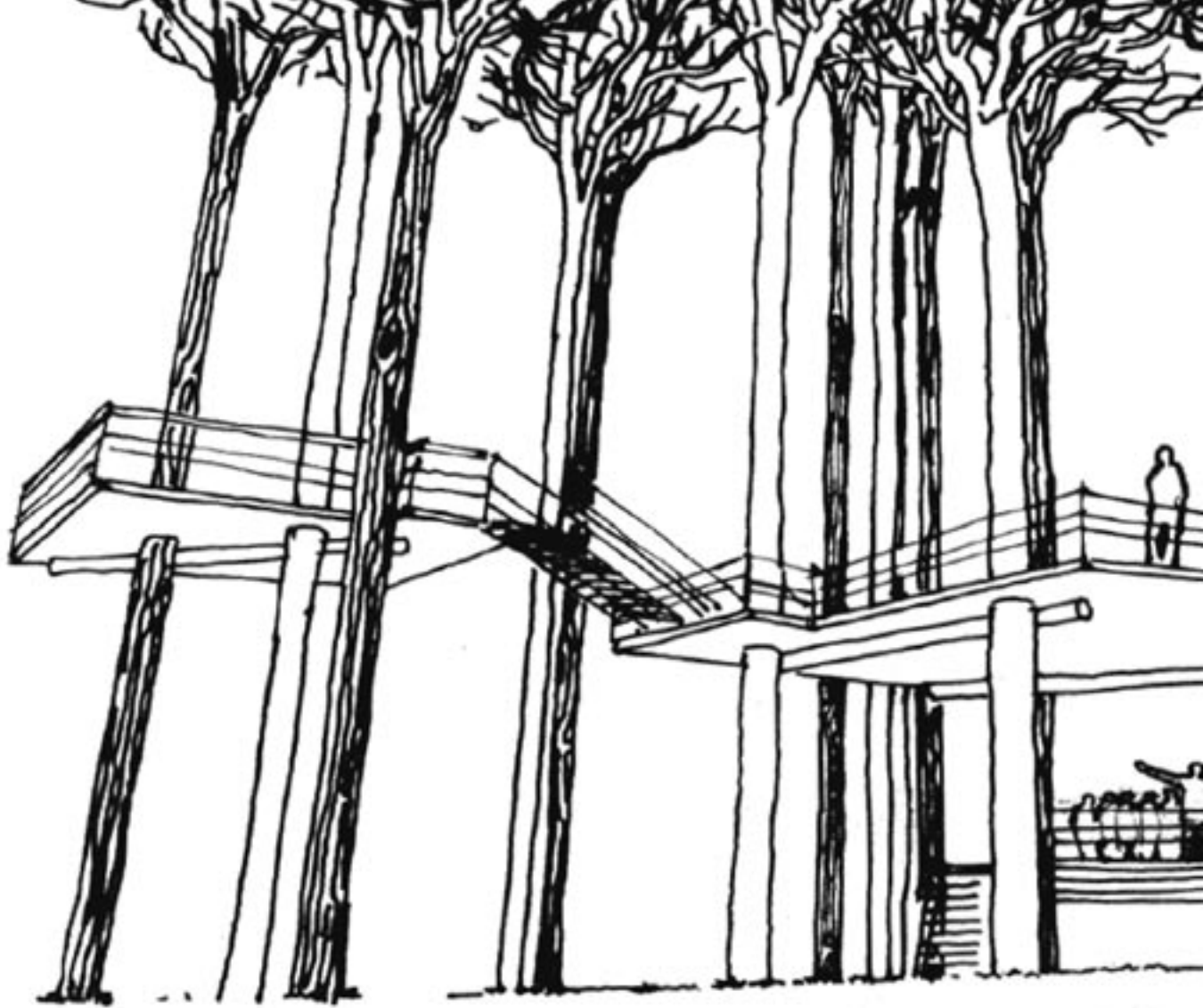


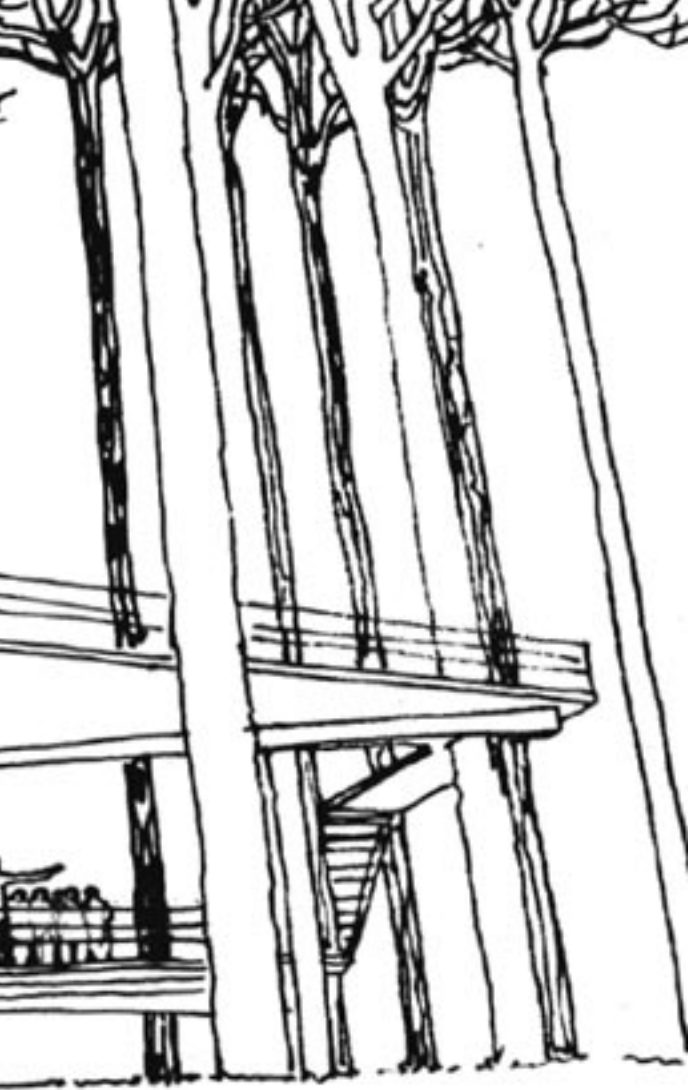


the dreamhouse









our **philosophy** is to help you experience the feelings you certainly felt when you were a child. we don't want to teach you to climb a tree; we want to invite you to consider the possibility of turning your point of view upside down: turning trees from an element perceived from the outside, and far too often from a distance, into a new vantage point for observing the world.

**for us, being on a tree has a different meaning.**



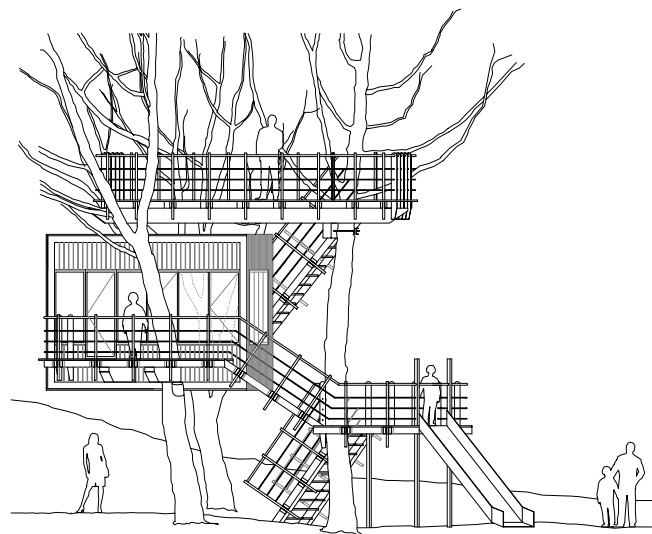
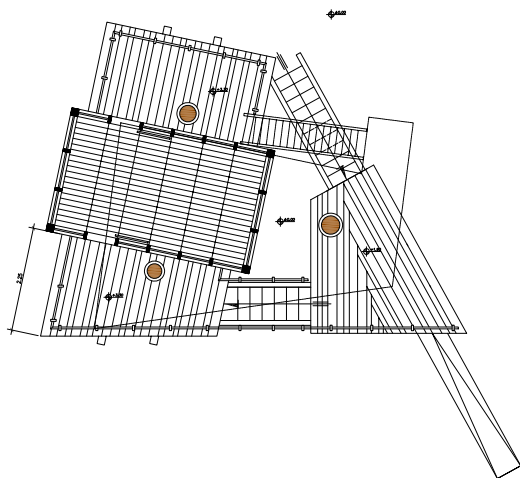
platform height  
2m /3m/7m

covered area  
12 mq

platform surface  
70 mq

casaluna





designed and built on three pines on monte argentario, this structure gives its owners the opportunity to dialogue with the three trees, as they look down over Orbetello lagoon. a path spirals relentlessly up towards the treetops, offering different and unexpected observation points and views of the horizon as it winds its way up. the marvellous discovery of the moon's silvery reflection in the lagoon from up high hardly entices you to go back down to earth.











trees



## what kind of tree?

this is the question we are asked most often.

so far, our answer has always been the same: any type of tree can be home to a tree house.



**Fir:** the foliage of firs typically leaves little room for a house. if there are several trees close together they can be used for walkways or raised structures for schools or sports.

**Maple:** excellent, even for very large houses. the trunks often branch out just a few metres off the ground so that even quite heavy structures can be built in a single tree.

**Beech:** a mature tree lends itself perfectly to the construction of a house. it is important to pay attention to the distribution of the branches of leaves as they can often shield away much of the available sunlight.

**Walnut:** very sturdy and strong, often with branches forking out about one third up its height, providing an excellent base for a largish house.

**Pine:** the trunk almost always branches out at the top, excellent for supporting structures at considerable heights.

**Plane tree:** very sturdy and usually large enough to accommodate a fully-serviced, multi-storey house.



platform height  
5m /8m

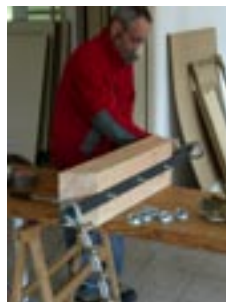
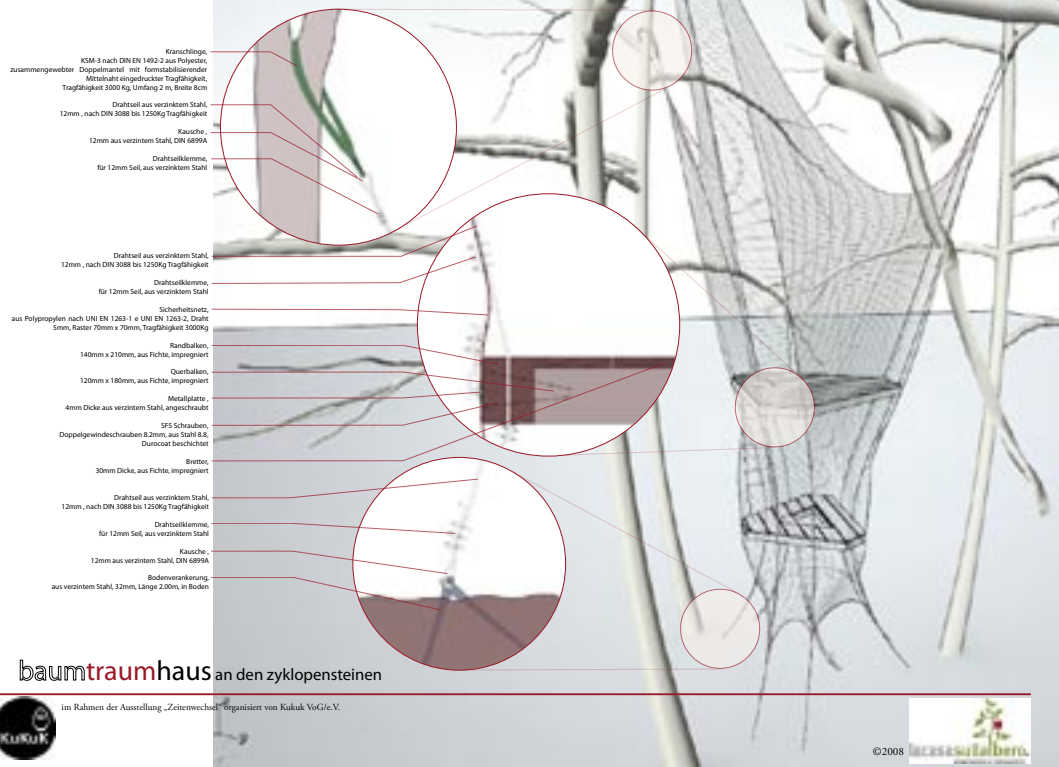
covered area  
12 mq

platform surface  
24 mq

baumtraumhaus

installation designed for the „ZeitenWechsel-Kultur (t) raum ohne Grenzen“ exhibition for the Kukuk Association, based on a two-fold theme of dreams and boundaries, seen as a permeable element to be crossed. not as a partition.

our invitation is to cross a boundary, but vertically instead of from the usual horizontal perspective, charming and as magical as a twilight forest. the reason for going beyond the boundary is to reach the tops of the trees and experience the dynamic reality of their scent and noise, in contrast with the









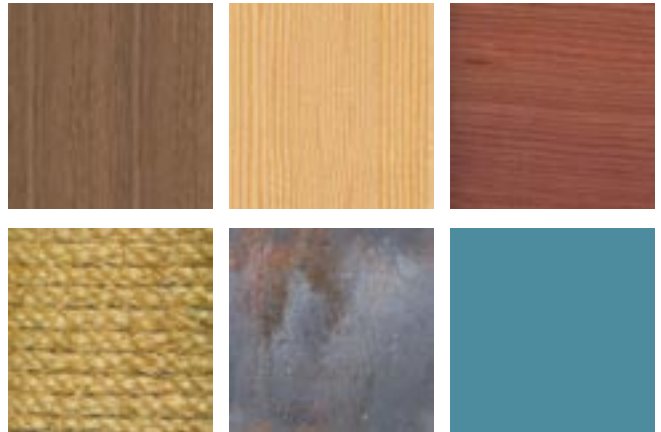




materials

wood, **wood** and more wood is the first thing that comes to mind as regards the materials we use to build our tree houses. wood is certainly the material we use most, but it isn't the only one.

we also use other **natural materials** (string rope, hemp, jute, cork, reeds, bamboo, fabric etc.) and **plastics**, such as resin, as this is perfect for building one-piece shells that are particularly lightweight, futuristic, functional and durable. we also use various **metals**, as they offer great potential especially for interiors, roofing or for articulated structures. however we don't use iron as this tends to rust.







platform height  
4m /6m /8m

covered area  
40 mq

surface  
50 mq

volume  
120 mc

platform surface  
70 mq

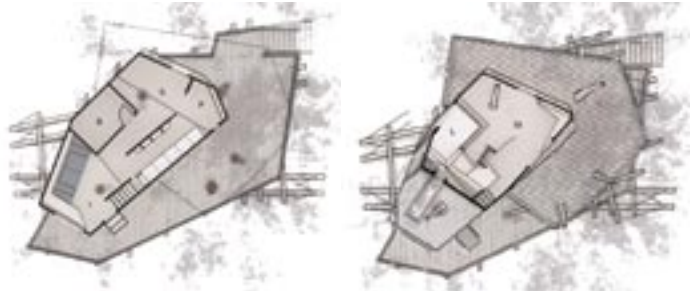
casajoras





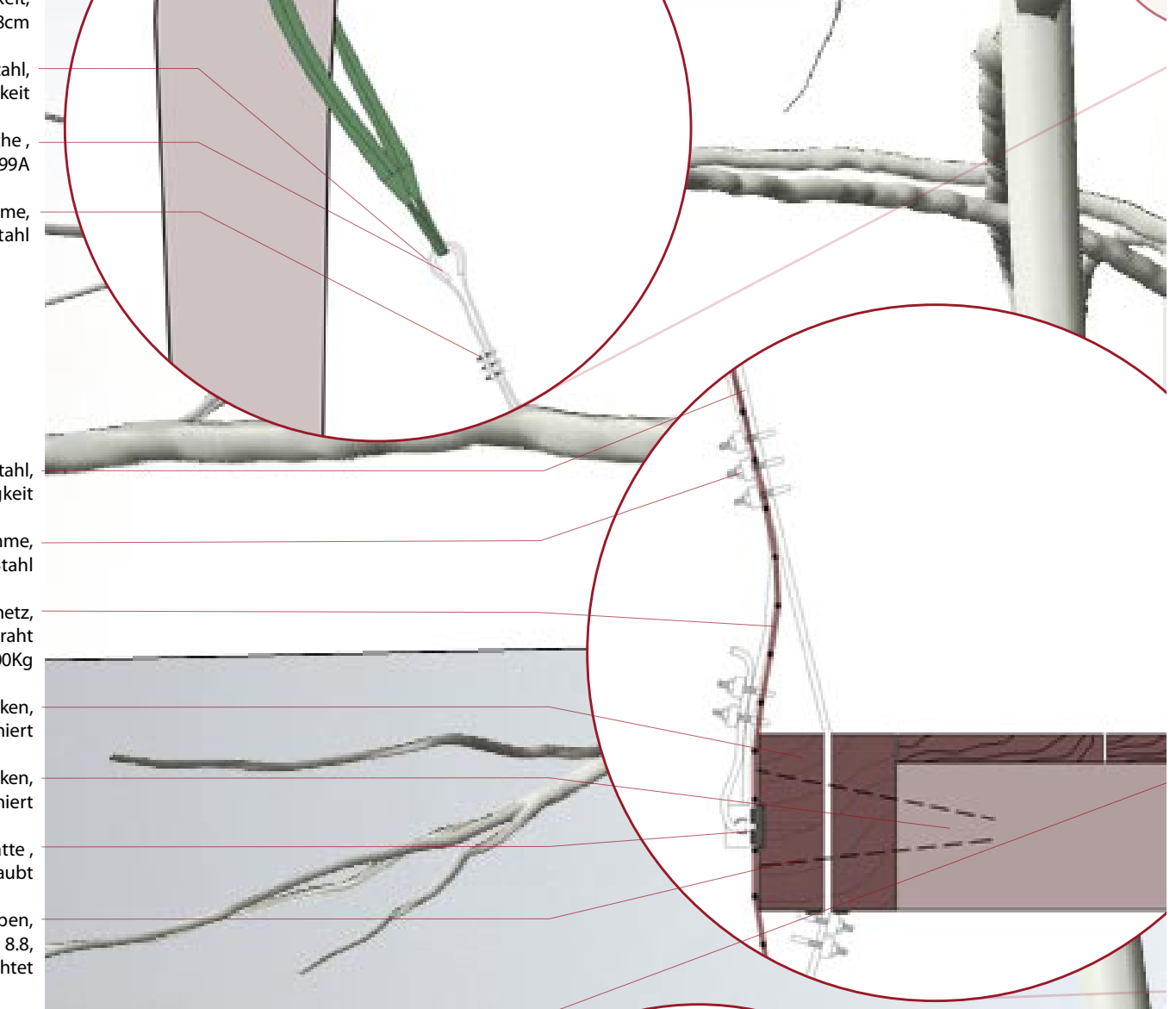
this structure is suspended on 5 beeches and was designed to meet the specific requests of the client who wants to enjoy it with his family, all year round.

as it is still not conceivable to design houses with a single distribution system to supply all the taps with



drinking water, we opted for the most appropriate technical solutions.

this is why we included 3 separate water systems (for drinking water, sewage and recycled rainwater for flushing the toilet). solar panels are connected up to the mains water network to heat the hot water.

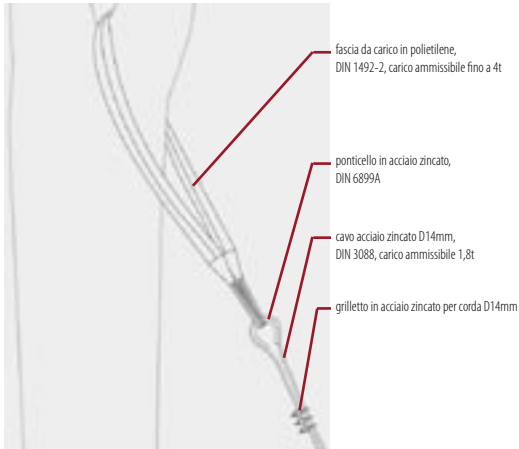


design and security

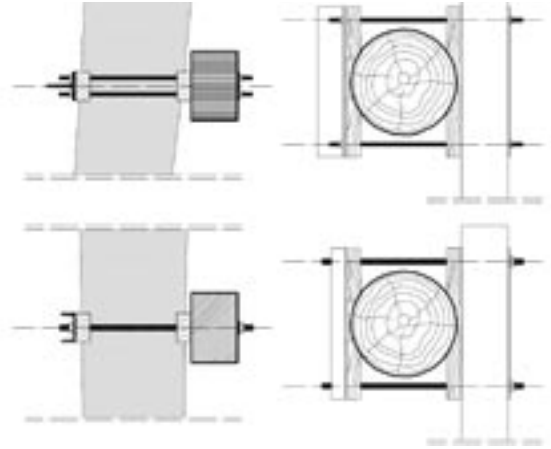
## platform. multi-storey. large. small. round. square.

the tree, its trunk, its branches and its leaves decide what a house will look like, but it will certainly be much more comfortable than you imagine. we use a dendrostat to choose which tree is best suited for the type of house required after our first, all important inspection. although each tree conditions the design of the house, it is rare that a house cannot be built. we consider the health of the tree: trunk, roots and foliage. we study its stability and health and general condition using visual analysis (VTA - visual tree assessment), so we can determine in advance if the tree is suitable to become „home“ to a house. the dendrostatic analysis is completed with a resistograph that determines the strength and the load-bearing capacity of the wood.

### 1\_ Cables Suspension



### 2\_ beams support







platform height  
1m /4m /6m

covered area  
16 mq

platform surface  
35 mq

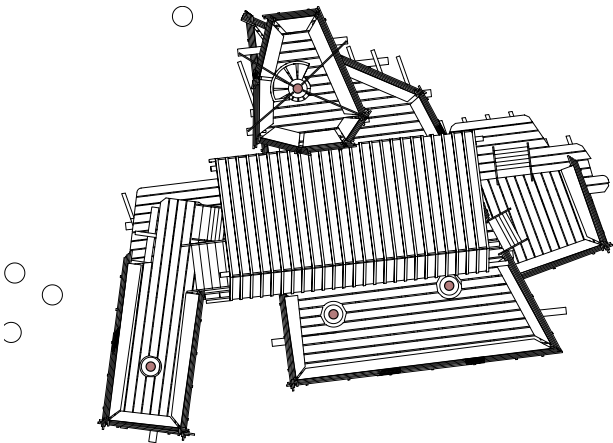
casa hauset



sitting on several fir trees in hauset wood (B), this house will be built for the local school to give the kids the chance to experience the wonders of the natural environment surrounding their school for themselves.

high up among the trees, they are in a perfect position for exploring how they feel about nature, developing a more sincere relationship.

the people in charge of hauset school consider it an ideal place to teach and enhance the love of nature among the citizens of tomorrow to ensure the environment will get the attention and respect it deserves.





platform height  
4m

covered area  
16 mq

surface  
10 mq

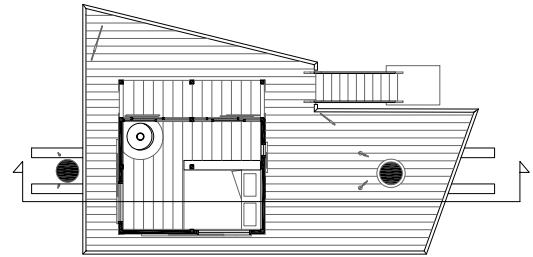
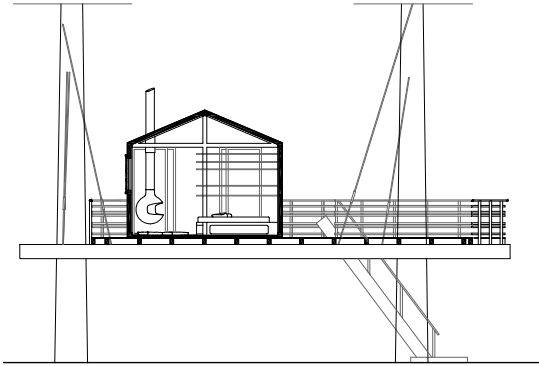
volume  
25 mc

platform surface  
40 mq

casafranki



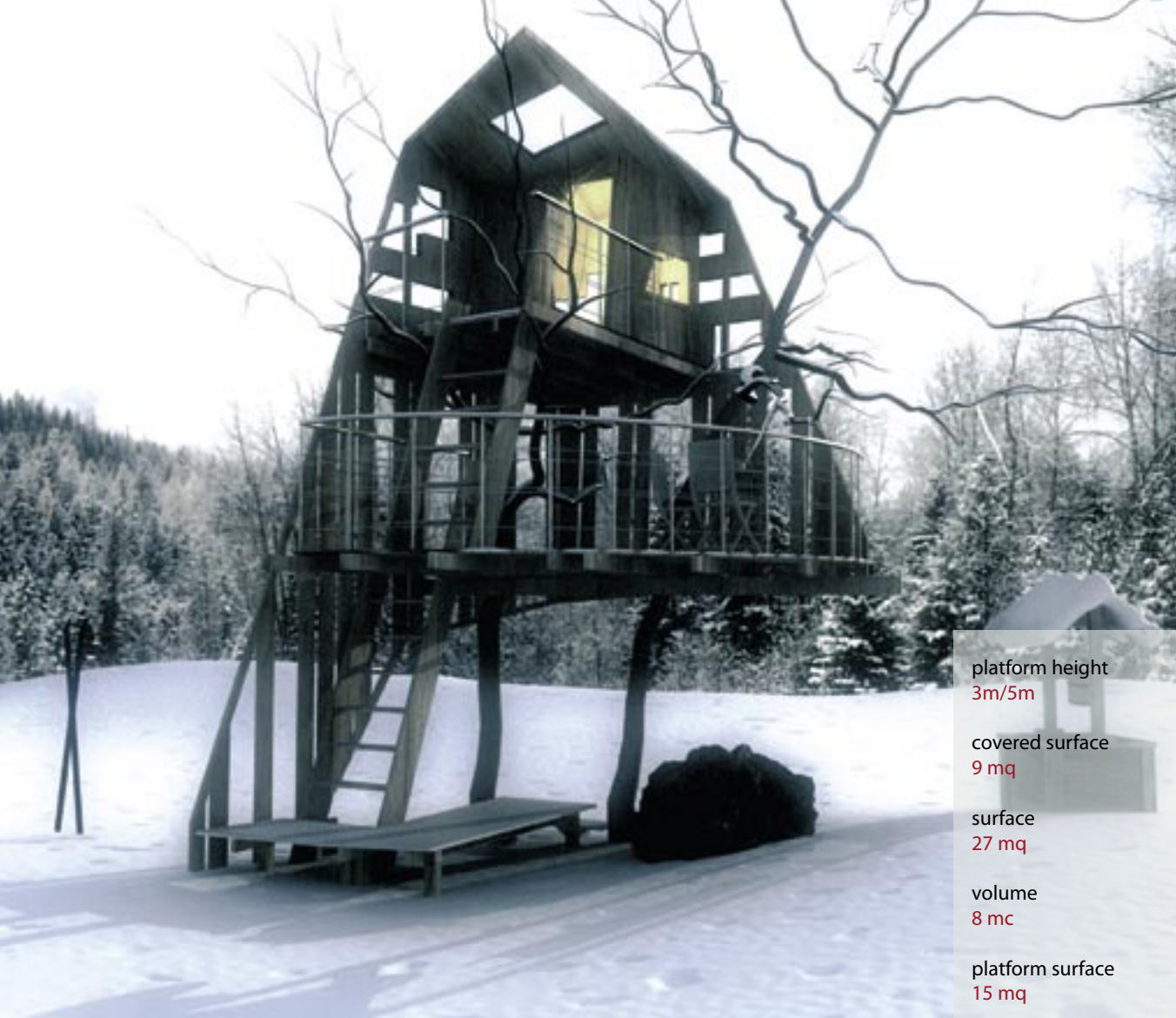
a spacious platform, suspended on two large oaks, acts as the base for a little „hut“, designed as a new version of the classic garden shed but reduced to the bare minimum and with more contemporary styling.



any notion of decoration is taken over by the structure and the ecological elements that are its major features.

the house has plenty of space inside; it is insulated and enclosed by sliding doors, with a fireplace so the owners can spend cosy winter evenings on the tree tops.





platform height  
3m/5m

covered surface  
9 mq

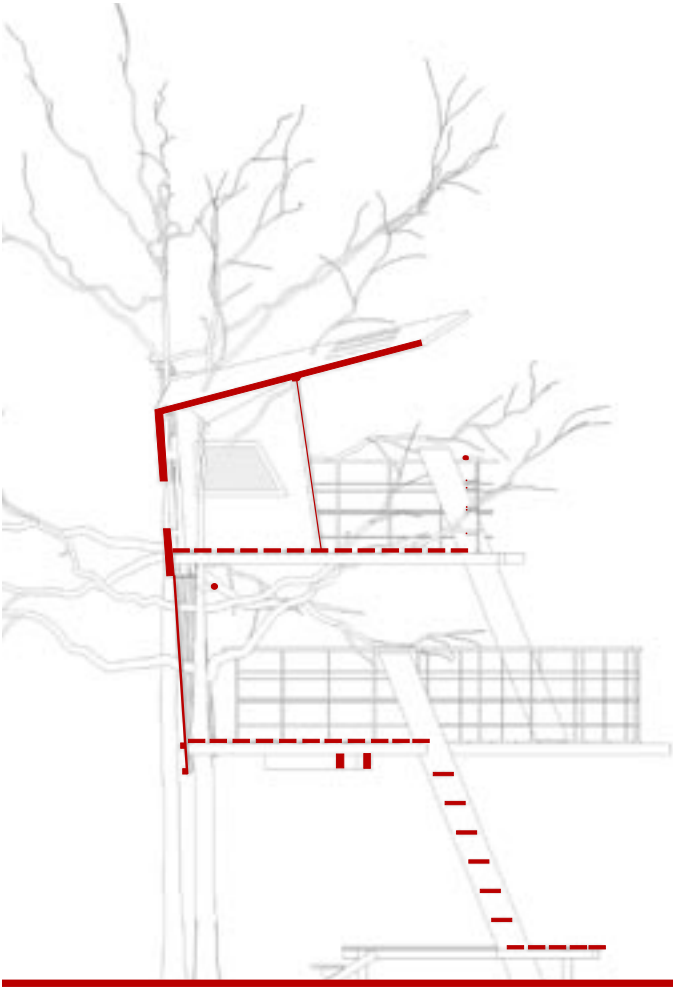
surface  
27 mq

volume  
8 mc

platform surface  
15 mq

casa**morgana**

supported by two young but sturdy birch trees; the idea for this small house came from the desire to have a den close to the existing house for rest and relaxation, whatever the weather. the enclosed area on the top floor is large enough to accommodate a desk and chair or a bed, so you can sit tight should the heavens open.





other projects





### casegrego

a raised village of little houses, all linked to one another by bridges and steps, is a perfect solution for eco friendly farm stay holidays, campsites and B&B's that want to offer their guests a chance to get up close to nature.



### PSP

raised multifunctional platforms. idea for romanatura, agency for the parks of rome, for example as watchout platform for the fire department in the pinewood of castel fusano, rome.



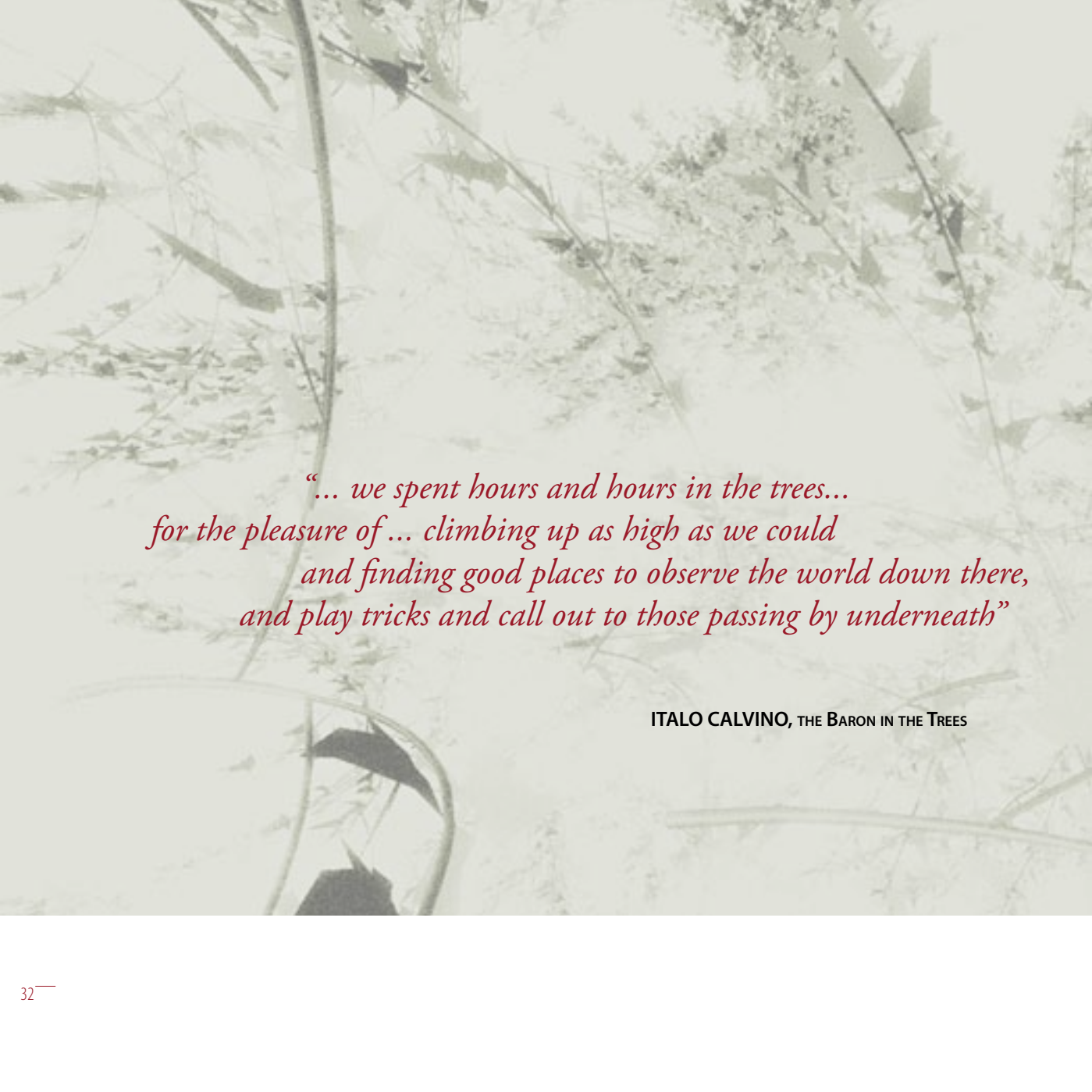
### casalionka

a retreat for relaxing in silence, contemplating the stillness of the trees. the large patio offers a comfortable space for outdoor living. an ideal suite for hospitality businesses looking to offer their guests original accommodation.



### casalambda

designed to look out over the Mediterranean sea, this structure recalls the shapes of the waves as it reaches out towards them. its shell-shaped frame offers an exclusive and unique view over the sea.



*“... we spent hours and hours in the trees...  
for the pleasure of ... climbing up as high as we could  
and finding good places to observe the world down there,  
and play tricks and call out to those passing by underneath”*

**ITALO CALVINO, THE BARON IN THE TREES**



## IMPRESSUM

© 2009 lacasasullalbero®

designs, text, images, rendering and layout from lacasasullalbero

all rights reserved

no contents of this book can be copied, reproduced, published, downloaded, returned,  
transmitted or distributed in any way without permission



